

# Link CCTV Case Study University of London

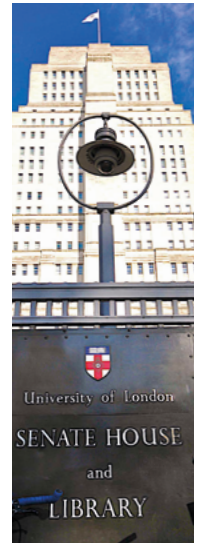


Start >



UNIVERSITY  
OF LONDON





The University of London is a federal University and is one of the oldest, largest and most diverse universities in the UK. Established by Royal Charter in 1836, the University is recognised globally as a world leader in Higher Education. It consists of 18 self-governing Colleges of outstanding reputation, together with a range of prestigious Central Academic Bodies and Activities. Learn more about the University of London at [www.london.ac.uk](http://www.london.ac.uk)

On-site TFM provider, Balfour Beatty WorkPlace, manages 31 buildings for the University, including 8 Halls of Residence buildings and a large external precinct in the Bloomsbury area, which provides access routes to several Colleges within the area, including SOAS and Birkbeck. The safety and security of its students, visitors and guests is of prime importance to the University.

Of the 31 buildings that BBW manage, 14 buildings and the external precinct area are covered by CCTV and the University of London took the decision to embark on an improvement plan that would address any shortcomings in existing arrangements and ultimately result in a full review of life cycle management, future growth and expansion, synergies within the University and time-saving efficiencies.

Balfour Beatty WorkPlace, under instruction from the University, put this improvement work out to tender in 2011 and independent CCTV technology specialists Link CCTV Systems won the contract to project manage the operation, from survey and design through to installation and maintenance.

#### **Link CCTV's brief was:**

- To improve safety and security to halls of residence buildings.
- To enable remote CCTV access from multiple locations for building management and security staff to live and recorded CCTV images, removing the need to visit each site to review CCTV footage from incidents.
- To increase CCTV coverage by providing fixed detailed views of all points of entry/exit and security reception areas.
- To improve the quality of live and recorded CCTV images.

*“It's much more than a client-supplier relationship between us. We needed a partner, not just a supplier. It's all about teamwork and that's very important on major projects like this where so many factors are at stake.”*

#### **The solution:**

Link installed and replaced CCTV systems for eight University of London Halls of Residence buildings. The new CCTV systems provide fixed static camera coverage of all points of entry/exit and security reception areas. The CCTV images are recorded by high performance 25pps 'real time' Samsung SRD-1670DC Digital Video Recorders (DVR). Recorded images are retained for 31 days at full frame rate.

Utilising the existing high performance site-wide LAN, live and recorded CCTV images are available for the University of London Building Management teams and Balfour Beatty WorkPlace security team, by using Samsung's Net-I ware or Smart Viewer software applications. This technology enables the onsite team fast access to review live and recorded events at any of the Halls of Residence.

A high performance 1080P Full HD CCTV camera has been installed at International Hall reception lobby providing increased image quality (five times the resolution of standard analogue CCTV cameras) – live and recorded images can be viewed locally and in the new Stewart House CCTV Control Room.

The project was completed in September 2011.



Andy Combe, Soft Services Manager at Balfour Beatty WorkPlace believes that a key element in the success of the project was the relationship between Andy Raymond, Regional Sales Manager for Link CCTV Systems and Balfour Beatty WorkPlace.

Mr Combe said: *"It's much more than a client-supplier relationship between us. We needed a partner, not just a supplier. It's all about teamwork and that's very important on major projects like this where so many factors are at stake."*

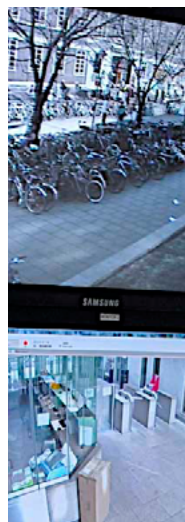
*The understanding of our needs and commitment shown by Andy Raymond and his team was second to none.*

*Given our pre-existing strong working relationship with Link CCTV Systems, we had no hesitation in appointing Link CCTV to project manage the relocation of the University of London's CCTV control room from Senate House in Malet Street to Stewart House in Russell Square."*

The existing control room, in North Block of Senate House, was due for refurbishment and this provided an opportunity to invest for the future and upgrade the CCTV system and associated kit enabling the University to have a platform for growth, ensuring the needs of all stakeholders and students are met.

**Link CCTV's brief was to:**

- Design and deploy a new CCTV control room monitor display, operator's workstation and supervisor's desk for the new location in Stewart House.
- Migrate all existing CCTV cameras to the new control room and install replacement digital recording and control equipment.
- Upgrade existing outdated external fully functional PTZ cameras providing coverage of the University of London precinct areas and internal static CCTV cameras providing coverage to Stewart House.



**The solution:**

New Samsung high performance 'real time' digital recording equipment was installed providing real time recorded images for all precinct and local building cameras.

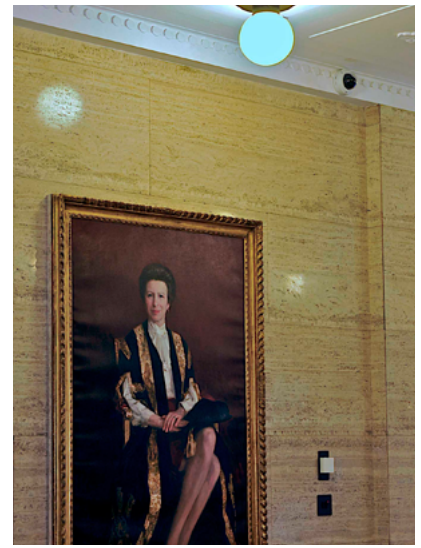
The new control room design solution incorporated Samsung Net-I viewer and Samsung MAP Viewer software enabling control room operators to view live camera images from any of the surrounding buildings or remote halls of residence.

By simply clicking on one of the multiple layered maps relevant camera images can be display on the monitor wall or local operator's console.

The existing room was very small, enclosed, and ineffective. The new control centre is light and airy, spacious, well-designed and provides a platform for growth and the potential to move forward to 24 hour surveillance.

During the relocation Link CCTV supplied and installed more than 90 cameras in Senate House, Stewart House and the precinct areas, diverted approximately 400m of cabling while encountering issues such as Listed Building status, accessing cabling in underground tunnels and the logistics of moving men and equipment between buildings almost a quarter of a mile apart.

The installation was completed in the summer of 2012.



The relationship between Balfour Beatty WorkPlace and Link CCTV Systems has flourished in the 18-month period from the initial quotation for the first project to completion of the second project.

**The partners:**



Balfour Beatty WorkPlace provides total facilities management services to sites across the University of London entire estate. Our dedicated team working with the University's FM Team delivers a full range of services including mechanical and electrical maintenance, grounds, security, reception, post and cleaning. Under the terms of the agreement, BBW are responsible for providing a comprehensive range of services in staff working areas and student Halls of Residence at all 31 sites across the central London estate.

Balfour Beatty WorkPlace provides support services for clients throughout the UK, delivered by a 9,000 strong team; we work hard to make a big impact. Our enthusiasm and experience is crucial in delivering exceptional facilities, allowing our clients organisation to excel.



Link CCTV Systems is a technology specialist in the design, implementation and after-sales support of CCTV, video data management and associated systems.



The company offers its clients access to unique tools such as Site Locker™, an audit system giving interactive plans for the centre backed up by a database not only for CCTV but for all the centre's operational Inventory.

ProjectPoint™ is an on line resource centre offered by Link CCTV to manage on-going projects, access to real time service data and reports including logging and managing service calls, storage of all system and site documentation and contact management.

